

For Those Who Wish to
Improve The Living Comfort



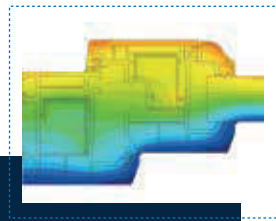
R-R İTHALAT İHRACAT
VE PAZARLAMA A.Ş.



EVEREST MAX IS THE CHOICE OF THOSE WHO ARE
AFTER COMFORT AND INSULATION WITHOUT
OVERSTRAINING THE BUDGET

deceuninck

EVEREST MAX



Everest Max System is 60 mm wide and designed with 4 chambers and 2 gaskets. Use of TPE gaskets has the advantage of seals on the corners and thus provides a perfect insulation.

System has a wide range of products with 90 mm and 150 mm sash profiles, expansion and interconnecting profiles, angular corners, 90° and 135° angle corners, draib boards, aluminium threshold, various finishing profiles and recess profiles. Optimizing and minimizing the height of door sash and outward opening door sash, area of glass surface, in other words maximize viewing area, Everest Max System has different profile options, such as Everest Max frame, architrave frame and image frame (L54) that may generate solutions for different details.

Everest Max System has a unique design that speeds up the water drainage. The system enables fast production of special window styles such as folded, parallel sliding, outward-opening windows. Latch lock systems that are recommended for safety are applicable within the system. Everest Max System is compatible with all other systems. (Fly screen, blinds, shutters, etc.) Profiles in Everest Max System are in compliance with TS 5358 EN 12608 standards.

Basic (MX) Colours



Solex (FX) Colours



Building a sustainable home



Environment - friendly
Co/Zn stabilizer is
used in the production
of Deceuninck profiles.